

# CDP-CX200

---

**SONY.**

## **SERVICE MANUAL**

*US Model  
Canadian Model  
AEP Model  
UK Model  
E Model  
Australian Model  
PX Model*

### **SUPPLEMENT-2**


File this supplement with the service manual.

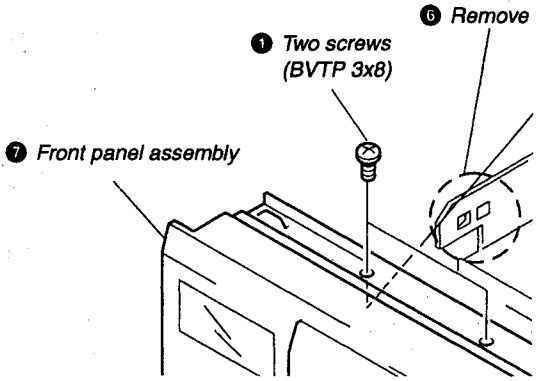
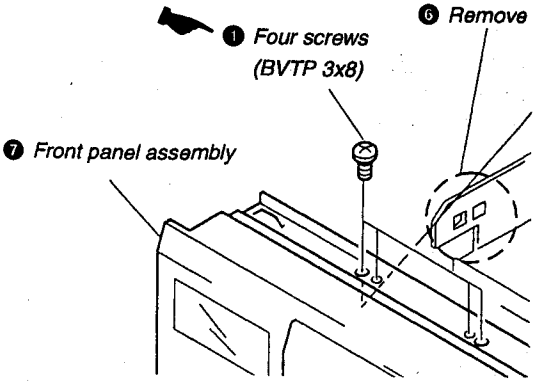
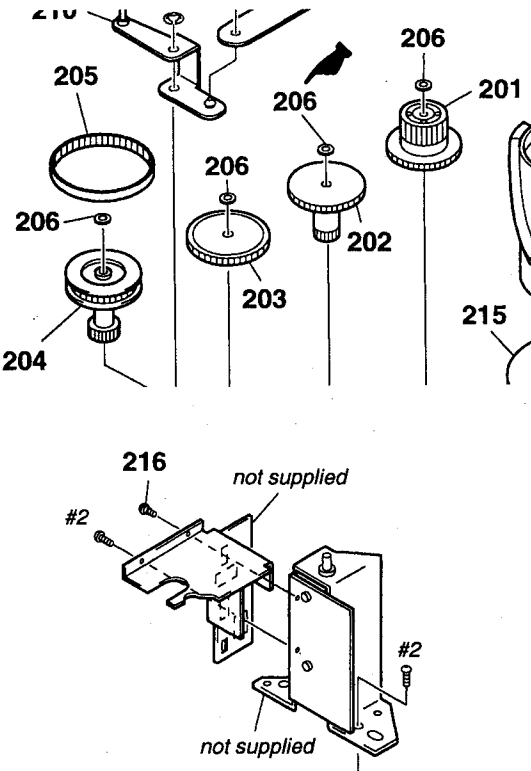
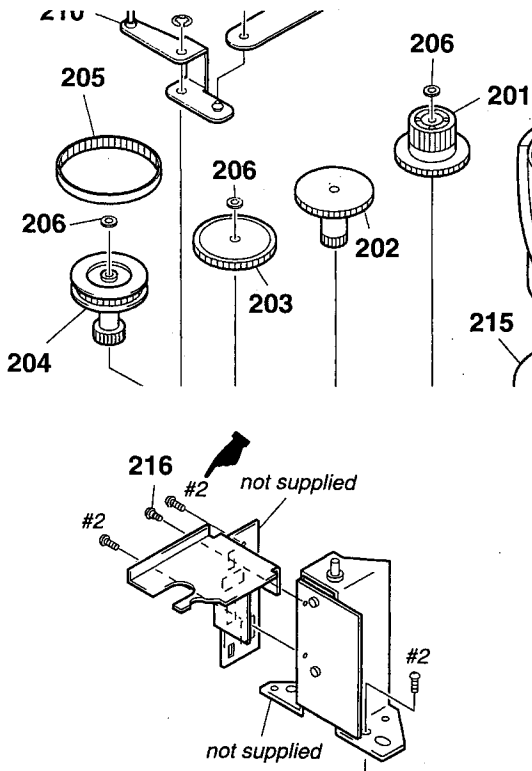
**Subject : 1. CORRECTION  
2. PARTS CHANGED  
3. DISC SENSOR ADJUSTMENT  
4. BOARD AND CIRCUIT CHANGE**

(ECN-CD600998)

# 1. CORRECTION

• Correct your service manual as shown below.

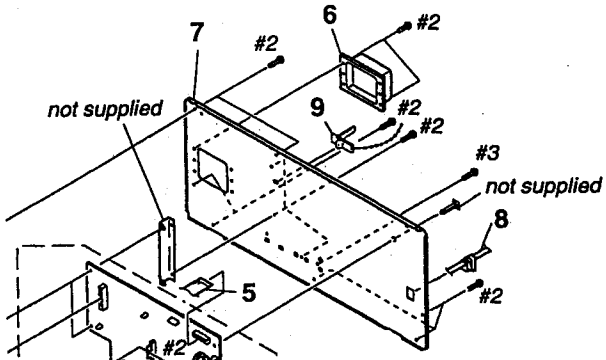
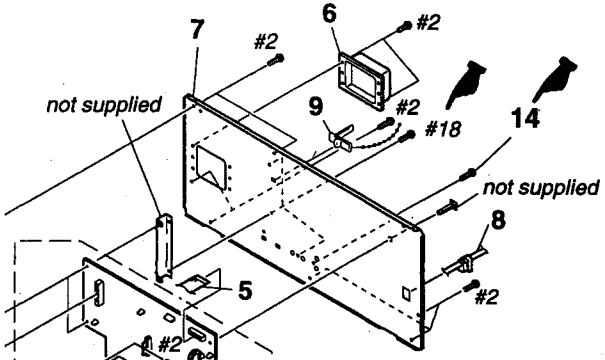
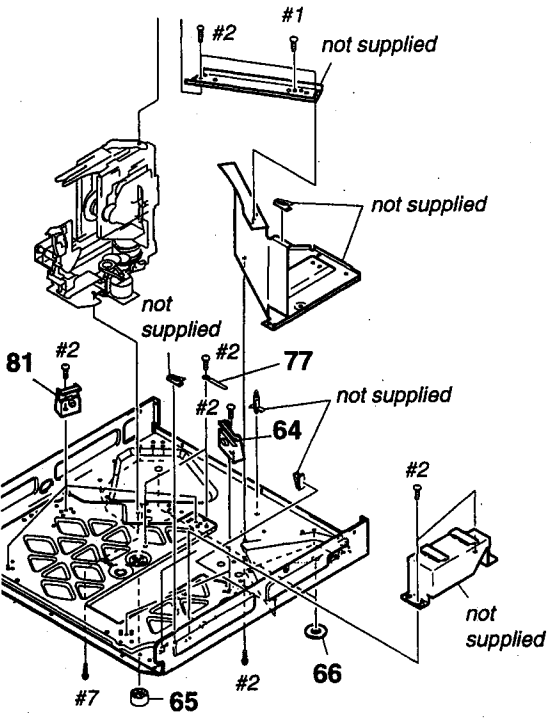
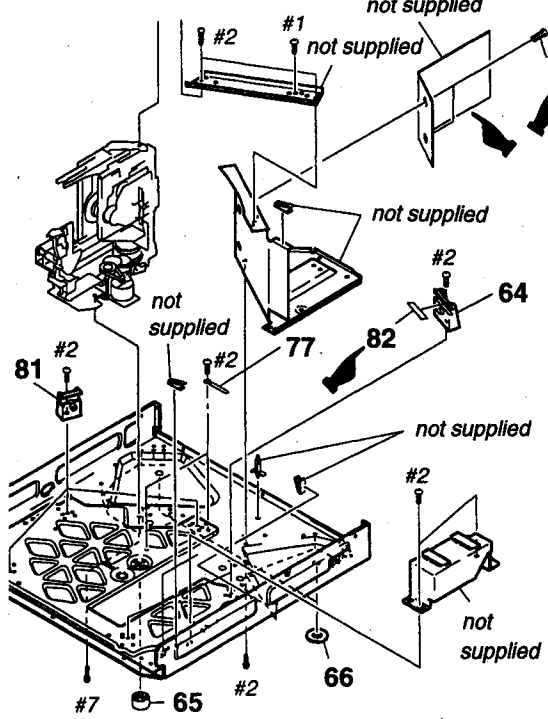
 : indicates corrected portion.

Page	INCORRECT	CORRECT																				
9	 <p>① Two screws (BVTP 3x8)</p> <p>⑥ Remove</p> <p>⑦ Front panel assembly</p>	 <p>① Four screws (BVTP 3x8)</p> <p>⑥ Remove</p> <p>⑦ Front panel assembly</p>																				
14	<p><b>SENSOR ALIGNMENT</b></p> <p>If the disc table swings to the left and right just before the disc is chucked, perform the following adjustment.</p>	<p><b>SENSOR ALIGNMENT</b></p> <p>Perform this adjustment after the "holder (disc A) adjustment".</p> <p>If the disc table swings to the left and right just before the disc is chucked, perform the following adjustment.</p>																				
52	<table border="1"> <thead> <tr> <th>Ref. No.</th> <th>Part No.</th> <th>Description</th> <th>Remark</th> </tr> </thead> <tbody> <tr> <td colspan="4" style="text-align: center;">*** EXPLODED VIEWS ***</td> </tr> </tbody> </table>	Ref. No.	Part No.	Description	Remark	*** EXPLODED VIEWS ***				<table border="1"> <thead> <tr> <th>Ref. No.</th> <th>Part No.</th> <th>Description</th> <th>Remark</th> </tr> </thead> <tbody> <tr> <td colspan="4" style="text-align: center;">*** EXPLODED VIEWS ***</td> </tr> <tr> <td>FL701</td> <td>1-517-517-11</td> <td>INDICATOR TUBE, FLUORESENT</td> <td></td> </tr> </tbody> </table>	Ref. No.	Part No.	Description	Remark	*** EXPLODED VIEWS ***				FL701	1-517-517-11	INDICATOR TUBE, FLUORESENT	
Ref. No.	Part No.	Description	Remark																			
*** EXPLODED VIEWS ***																						
Ref. No.	Part No.	Description	Remark																			
*** EXPLODED VIEWS ***																						
FL701	1-517-517-11	INDICATOR TUBE, FLUORESENT																				
53	<table border="1"> <tbody> <tr> <td>FL701</td> <td>1-517-517-11</td> <td>INDICATOR TUBE, FLUORESENT</td> <td></td> </tr> </tbody> </table>	FL701	1-517-517-11	INDICATOR TUBE, FLUORESENT																		
FL701	1-517-517-11	INDICATOR TUBE, FLUORESENT																				
54	 <p>210</p> <p>205</p> <p>206</p> <p>206</p> <p>201</p> <p>206</p> <p>202</p> <p>203</p> <p>204</p> <p>215</p> <p>216 not supplied</p> <p>#2</p> <p>#2</p> <p>not supplied</p>	 <p>210</p> <p>205</p> <p>206</p> <p>206</p> <p>201</p> <p>206</p> <p>202</p> <p>203</p> <p>204</p> <p>215</p> <p>216 not supplied</p> <p>#2</p> <p>#2</p> <p>not supplied</p>																				

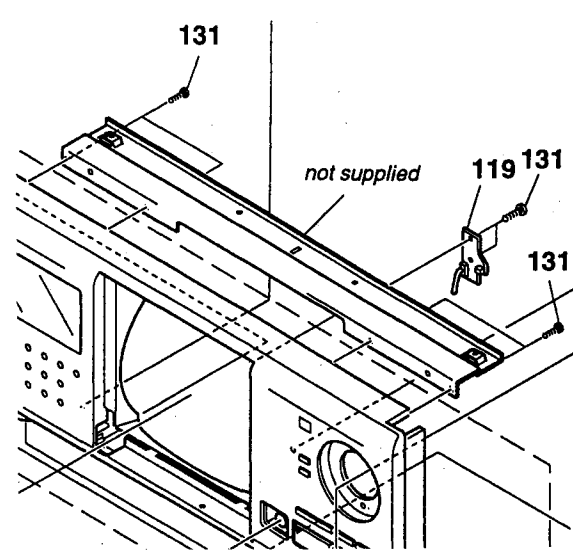
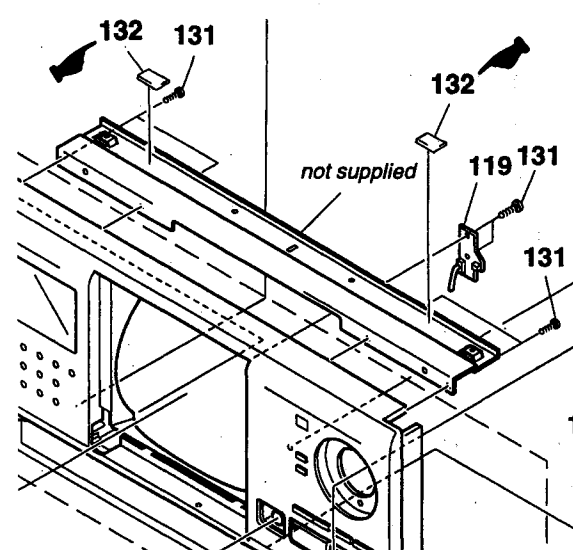
Page	INCORRECT				CORRECT			
	Ref. No.	Part No.	Description	Remark	Ref. No.	Part No.	Description	Remark
62			*** ACCESSORIES & PACKING MATERIALS ***				*** ACCESSORIES & PACKING MATERIALS ***	
		3-707-584-21	COVER, BATTERY (FOR RM-DX200)			4-981-643-01	COVER, BATTERY (FOR RM-DX200)	
63			*** HARDWARE LIST ***				*** HARDWARE LIST ***	
	#4	7-685-534-19	SCREW +BTP2.6X8 TYPE2 N-S		#18	7-682-547-04	not used SCREW +BV3X6, S TIGHT	

## 2. PARTS CHANGED

☛ : indicates changed portion.

Page	FORMER				NEW			
	Ref. No.	Part No.	Description	Remark	Ref. No.	Part No.	Description	Remark
50			*** EXPLODED VIEWS ***				*** EXPLODED VIEWS ***	
								
51	* 74 * 75	3-378-433-01 4-985-553-01	CUSHION, SARANET CUSHION		* 74 * 75 82 83	3-378-434-01 4-985-553-11 4-985-574-01 4-053-543-01	CUSHION, SARANET CUSHION SPACER (ROLLER) RIVET, NYLON	
								

 : indicates changed portion.

Page	FORMER				NEW			
	Ref. No.	Part No.	Description	Remark	Ref. No.	Part No.	Description	Remark
52	* 129	A-4699-036-A	JOG BOARD, COMPLETE		* 129	A-4699-036-A	JOG BOARD, COMPLETE (US, CND, E, AUS, PX, SP)	
					* 129	A-4699-507-A	JOG BOARD, COMPLETE (AEP, G, UK)	
					132	4-985-553-21	CUSHION	
								
53	157	4-982-854-01	HOLDER (DISC A)		157	4-988-143-01	HOLDER (DISC A2)	
59	<p>*** ELECTRICAL PARTS LIST ***</p> <p>* A-4699-036-A JOG BOARD, COMPLETE *****</p>				<p>*** ELECTRICAL PARTS LIST ***</p> <p>* A-4699-036-A JOG BOARD, COMPLETE ***** (US, CND, E, AUS, PX, SP)</p> <p>* A-4699-507-A JOG BOARD, COMPLETE (AEP, G, UK) *****</p>			

- Abbreviation
- CND : Canadian model
- G : German model
- SP : Singapore model
- AUS : Australian model

### 3. DISC SENSOR ADJUSTMENT

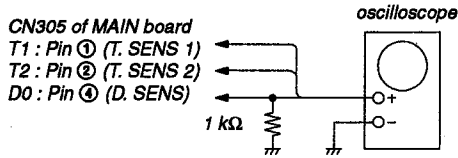
The adjusting volume RV301 is added instead of R308 on the MAIN BOARD in the middle of producing. Perform this adjustment for a set which has RV301.

#### Disc Sensor Adjustment

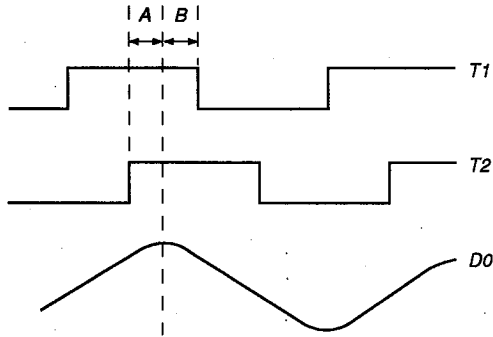
Perform this adjustment after completing all adjustments of the mechanism section.

If not performed accurately, the presence of the disc may not be detected properly.

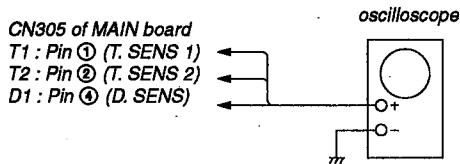
#### Connection 1:



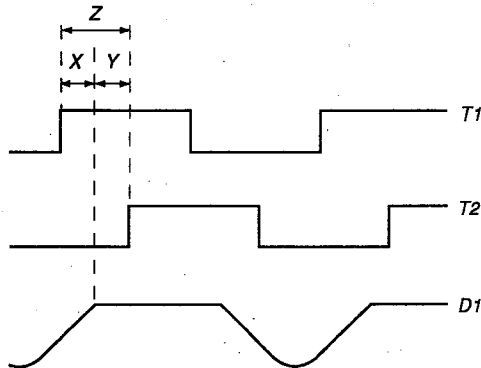
#### Waveform 1:



#### Connection 2:

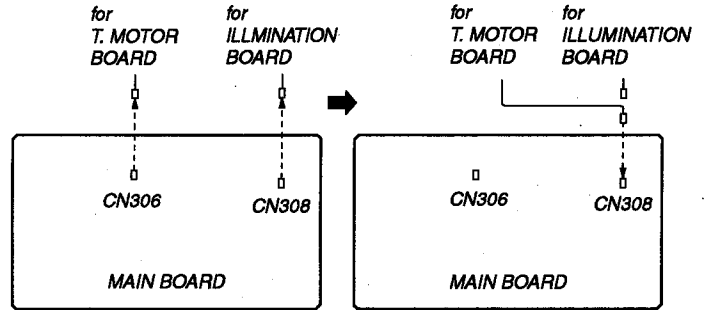


#### Waveform 2

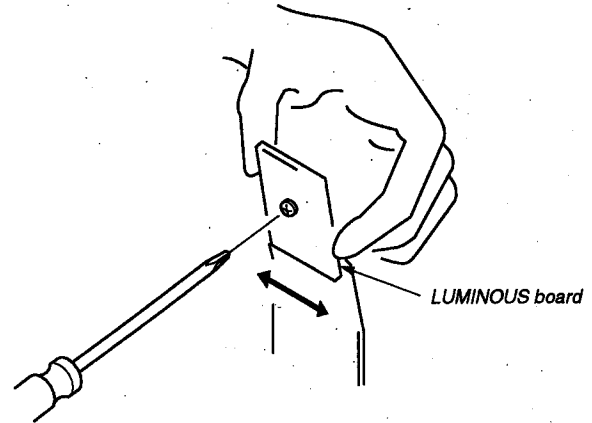


#### Procedure:

1. Connect the oscilloscope to Pins ①, ②, and ④ of CN305 of the MAIN board. Also connect a 1 kΩ resistor to Pin ④ at the same time. (Connection 1)
2. Disconnect the CN308 (2P) and CN306 (2P) cables of the MAIN board. Connect the cables connected to CN306 (connected to the T. MOTOR board) to CN308.

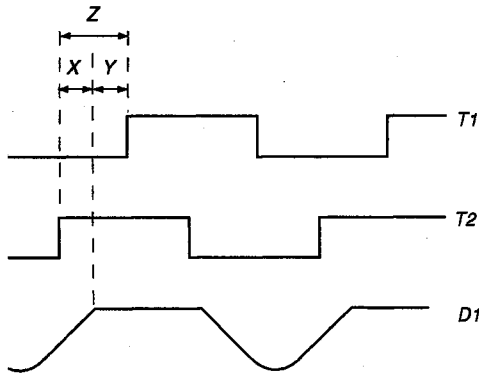


3. Open the front cover. (If closed, malfunctions by incorrect operations may result.)
4. Check that no discs are loaded in the unit, and press the POWER button to turn ON the power.
5. The rotary table will continue rotating in the clockwise direction.
6. Observe the waveform at that time on the oscilloscope.
7. Loosen the screw securing the LUMINOUS board slightly.
8. Slide the LUMINOUS board to the left and right so that the peak of the D0 waveform is at the center between the descending point of the T1 waveform and ascending point of the T2 waveform. (Waveform 1) After adjusting, apply locking compound.



9. Disconnect the resistor connected to Pin ④ of CN305 of the MAIN board. (Connection 2)
10. Observe the waveform on the oscilloscope. (Waveform 2)
11. Adjust RV301 of the MAIN board so that the waveform on the oscilloscope satisfies the following adjustment value 1.
12. Connect the connectors disconnected in Step 2 at their original positions.
13. Close the front cover, and rotate the JOG dial in the counterclockwise direction continuously so that the rotary table rotates continuously in the counterclockwise direction.
14. Observe the waveform on the oscilloscope and confirm that it satisfies the adjustment value 2 (waveform 3). If it does not, adjust RV301 of the MAIN board.

**Waveform 3:**



15. After the adjustment, load a disc only in slit 1, close the front cover, and press the POWER button to turn off the power.
16. Press the POWER button while pressing the ENTER button to turn on the power.
17. If the rotary table makes one round, and "YES" is displayed on the fluorescent indicator tube after it stops, it means that the adjustment has been performed properly.

**Adjustment value 1:**

At the shoulder part of waveform D1, T1 becomes H and T2 becomes L, and at the same time, the Y width must not be smaller than 1/4 of the Z width.

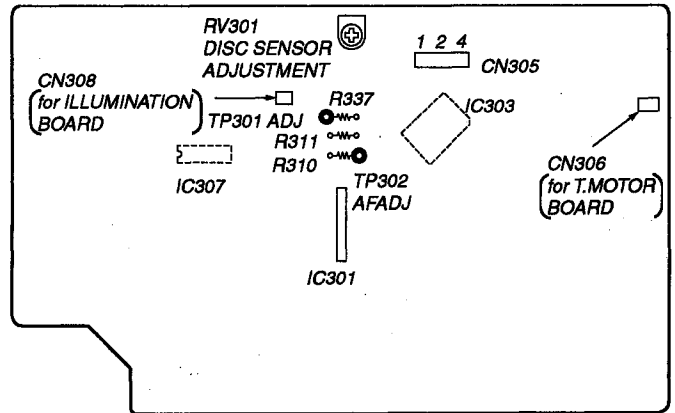
In order to satisfy this value more easily, adjust so that X=Y approximately and observe the deviation of the waveform.

**Adjustment value 2:**

At the shoulder part of waveform D1, T1 becomes H and T2 becomes L, and at the same time, the Y width must not be smaller than 1/4 of the Z width.

**Adjustment Location:**

**[MAIN BOARD] — Component Side —**



## ELECTRICAL PARTS LIST

**Note:**

The components identified by mark  $\Delta$  or dotted line with mark  $\Delta$  are critical for safety. Replace only with part number specified.

Les composants identifiés par une marque  $\Delta$  sont critiques pour la sécurité. Ne les remplacer que par une pièce portant le numéro spécifié.

When indicating parts by reference number, please include the board name.

- Due to standardization, replacements in the parts list may be different from the parts specified in the diagrams or the components used on the set.
- -XX, -X mean standardized parts, so they may have some difference from the original one.
- Items marked "\*" are not stocked since they are seldom required for routine service. Some delay should be anticipated when ordering these items.
- RESISTORS  
 All resistors are in ohms  
 METAL: Metal-film resistor  
 METAL OXIDE: Metal Oxide-film resistor  
 F : nonflammable

- SEMICONDUCTORS  
 In each case,  $\mu$  :  $\mu$ , for example:  
 uA...:  $\mu$  A..., uPA...:  $\mu$  PA..., uPB...:  $\mu$  PB...,  
 uPC...:  $\mu$  PC..., uPD...:  $\mu$  PD...
- CAPACITORS  
 uF :  $\mu$  F  
 COILS  
 uH :  $\mu$  H
- Abbreviation  
 CND : Canadian model  
 G : German model  
 SP : Singapore model  
 AUS : Australian model

Ref. No.	Part No.	Description	Remark	Ref. No.	Part No.	Description	Remark
*	A-4699-037-A	DISP BOARD, COMPLETE *****				< SWITCH >	
*	4-982-786-01	HOLDER (FL)  < CAPACITOR >		S701	1-572-184-11	SWITCH, TACTILE (POWER)	
C751	1-162-207-31	CERAMIC	22PF 5% 50V	S702	1-572-184-11	SWITCH, TACTILE (CONTINUE))	
C752	1-164-159-11	CERAMIC	0.1uF 50V	S703	1-572-184-11	SWITCH, TACTILE (SHUFFLE)	
C753	1-124-584-00	ELECT	100uF 20% 10V	S704	1-572-184-11	SWITCH, TACTILE (PROGRAM)	
C754	1-164-159-11	CERAMIC	0.1uF 50V	S705	1-572-184-11	SWITCH, TACTILE (REPEAT)	
C755	1-162-288-31	CERAMIC	330PF 10% 50V	S706	1-572-184-11	SWITCH, TACTILE (BLOCK 4)	
C756	1-162-288-31	CERAMIC	330PF 10% 50V	S707	1-572-184-11	SWITCH, TACTILE (BLOCK 3)	
C757	1-162-288-31	CERAMIC	330PF 10% 50V	S708	1-572-184-11	SWITCH, TACTILE (BLOCK 2)	
		< DIODE >		S709	1-572-184-11	SWITCH, TACTILE (BLOCK 1)	
D802	8-719-046-44	DIODE SEL5221S (POWER)  < FLUORESCENT INDICATOR >		S712	1-572-184-11	SWITCH, TACTILE (BLOCK 5)	
FL701	1-517-517-11	INDICATOR TUBE, FLUORESCENT  < IC >		S713	1-572-184-11	SWITCH, TACTILE (BLOCK 6)	
IC701	8-759-399-58	IC LC75725E  < RESISTOR >		S714	1-572-184-11	SWITCH, TACTILE (BLOCK 7)	
R701	1-249-415-11	CARBON	680 5% 1/4W F	S715	1-572-184-11	SWITCH, TACTILE (BLOCK 8)	
R702	1-249-417-11	CARBON	1K 5% 1/4W F	*****			
R703	1-249-419-11	CARBON	1.5K 5% 1/4W F	*	1-661-464-11	DOOR SW BOARD *****	
R704	1-249-421-11	CARBON	2.2K 5% 1/4W F			< SWITCH >	
R705	1-247-843-11	CARBON	3.3K 5% 1/4W	S802	1-762-386-11	SWITCH, PUSH (OPEN)	
R706	1-249-427-11	CARBON	6.8K 5% 1/4W F	*****			
R707	1-249-431-11	CARBON	15K 5% 1/4W	*	1-661-471-11	ILLUMINATION BOARD *****	
R708	1-249-437-11	CARBON	47K 5% 1/4W			< CONNECTOR >	
R711	1-249-415-11	CARBON	680 5% 1/4W F	CN810	1-506-481-11	PIN, CONNECTOR 2P	
R712	1-249-417-11	CARBON	1K 5% 1/4W F			< DIODE >	
R713	1-249-419-11	CARBON	1.5K 5% 1/4W F	D802	8-719-059-65	DIODE HLMF-KL05 (INSIDE ILLUMINATION)	
R714	1-249-421-11	CARBON	2.2K 5% 1/4W F	D803	8-719-059-65	DIODE HLMF-KL05 (INSIDE ILLUMINATION)	
R752	1-249-429-11	CARBON	10K 5% 1/4W	D804	8-719-059-65	DIODE HLMF-KL05 (INSIDE ILLUMINATION)	
R753	1-249-409-11	CARBON	220 5% 1/4W F			< RESISTOR >	
R754	1-249-409-11	CARBON	220 5% 1/4W F	R805	1-249-407-11	CARBON	150 5% 1/4W F
R755	1-249-409-11	CARBON	220 5% 1/4W F	R806	1-249-407-11	CARBON	150 5% 1/4W F
R853	1-249-413-11	CARBON	470 5% 1/4W F	R807	1-249-407-11	CARBON	150 5% 1/4W F

**JACK**   **JOG**

Ref. No.	Part No.	Description	Remark			
*	1-661-459-11	JACK BOARD *****				
*	4-962-200-01	PLATE (TR), GROUND  < CAPACITOR >				
C113	1-162-290-31	CERAMIC	470PF	10%	50V	
C213	1-162-290-31	CERAMIC	470PF	10%	50V	
C501	1-161-494-00	CERAMIC	0.022uF		25V	
C504	1-164-159-11	CERAMIC	0.1uF		50V	
C506	1-162-282-31	CERAMIC	100PF	10%	50V	
C511	1-164-159-11	CERAMIC	0.1uF		50V	(EXCEPT US,CND,E)
		< CONNECTOR >				
CN501	1-770-724-11	CONNECTOR, BOARD TO BOARD 9P				
CN502	1-770-724-11	CONNECTOR, BOARD TO BOARD 9P				
CN503	1-580-230-11	PIN, CONNECTOR (PC BOARD) 2P				
* CN504	1-568-951-11	PIN, CONNECTOR 2P				
		< DIODE >				
D501	8-719-987-63	DIODE 1N4148M				
		< JACK >				
J501	1-770-719-11	JACK, PIN 2P (LINE OUT)				
* J502	1-764-188-11	JACK (SMALL TYPE)(DIA. 3.5)(CONTROL A1)				
* J503	1-764-188-11	JACK (SMALL TYPE)(DIA. 3.5)(CONTROL A1)				
		< COIL >				
△ L501	1-421-915-11	COIL, LINE FILTER				
		< TRANSISTOR >				
Q502	8-729-620-05	TRANSISTOR 2SC2603-EF				
		< RESISTOR >				
R116	1-249-409-11	CARBON	220	5%	1/4W F	
R216	1-249-409-11	CARBON	220	5%	1/4W F	
R502	1-249-429-11	CARBON	10K	5%	1/4W	
R504	1-249-425-11	CARBON	4.7K	5%	1/4W F	
R505	1-249-429-11	CARBON	10K	5%	1/4W	
R506	1-249-393-11	CARBON	10	5%	1/4W F	
		< SWITCH >				
S501	1-762-151-11	SWITCH, SLIDE (COMMAND MODE)				
△ S502	1-572-675-11	SWITCH, POWER VOLTAGE CHANGE (VOLTAGE SELECTOR)(E,PX)				
		< TRANSFORMER >				
△ T501	1-429-670-11	TRANSFORMER, POWER (US,CND)				
△ T501	1-429-671-11	TRANSFORMER, POWER (AEP,G,UK,AUS,SP)				
△ T501	1-429-672-11	TRANSFORMER, POWER (E,PX)				

Ref. No.	Part No.	Description	Remark			
*	A-4699-036-A	JOG BOARD, COMPLETE (US,CND,E,AUS,PX,SP) *****				
*	A-4699-507-A	JOG BOARD, COMPLETE (AEP,G,UK) *****				
		< CAPACITOR >				
C601	1-124-584-00	ELECT	100uF	20%	10V	
C602	1-164-159-11	CERAMIC	0.1uF		50V	(AEP,G,UK)
C603	1-164-159-11	CERAMIC	0.1uF		50V	(AEP,G,UK)
		< BASE POST >				
CLP601	1-690-880-41	LEAD (WITH CONNECTOR) (AEP,G,UK)				
		< CONNECTOR >				
* CN601	1-568-862-11	SOCKET, CONNECTOR 19P				
		< DIODE >				
D601	8-719-313-45	DIODE SEL6810A-TH10 (■)				
D602	8-719-303-02	DIODE SEL2510C-D (▷)				
		< IC >				
IC601	8-759-459-84	IC NJL56H400				
		< TRANSISTOR >				
Q601	8-729-900-89	TRANSISTOR DTC144ES				
		< RESISTOR >				
R601	1-249-415-11	CARBON	680	5%	1/4W F	
R602	1-249-407-11	CARBON	150	5%	1/4W F	
R603	1-247-807-31	CARBON	100	5%	1/4W	
R604	1-247-807-31	CARBON	100	5%	1/4W	
R721	1-249-415-11	CARBON	680	5%	1/4W F	
R722	1-249-417-11	CARBON	1K	5%	1/4W F	
R723	1-249-419-11	CARBON	1.5K	5%	1/4W F	
R724	1-249-421-11	CARBON	2.2K	5%	1/4W F	
R725	1-247-843-11	CARBON	3.3K	5%	1/4W	
R726	1-249-427-11	CARBON	6.8K	5%	1/4W F	
		< JOG SWITCH >				
RE601	1-762-717-11	SWITCH, JOG (DISC)				
		< SWITCH >				
S711	1-572-184-11	SWITCH, TACTILE (ENTER)				
S721	1-572-184-11	SWITCH, TACTILE (■)				
S722	1-572-184-11	SWITCH, TACTILE (■)				
S723	1-572-184-11	SWITCH, TACTILE (▷)				
S724	1-572-184-11	SWITCH, TACTILE (◁)				
S725	1-572-184-11	SWITCH, TACTILE (▷◁)				

\*\*\*\*\*

The components identified by mark △ or dotted line with mark △ are critical for safety. Replace only with part number specified.	Les composants identifiés par une marque △ sont critiques pour la sécurité. Ne les remplacer que par une pièce portant le numéro spécifié.
--	--



Ref. No.	Part No.	Description	Remark
S726	1-572-184-11	SWITCH, TACTILE (CHECK)	
S727	1-572-184-11	SWITCH, TACTILE (CLEAR)	
*****			
*	1-661-465-11	L. MOTOR BOARD	
		*****	
		< MOTOR >	
M802	A-4604-847-A	MOTOR ASSY (LOADING)	
*****			
*	1-661-467-11	L.SW BOARD	
		*****	
		< SWITCH >	
S801	1-571-300-21	SWITCH, ROTARY (LOADING DET.)	
*****			
*	1-661-468-11	LUMINOUS BOARD	
		*****	
*	4-976-473-01	HOLDER (LED-S)	
		< DIODE >	
D801	8-719-055-84	DIODE GL-528VS1	
*****			
*	A-4699-023-A	MAIN BOARD, COMPLETE (US,CND)	
		*****	
*	A-4699-024-A	MAIN BOARD, COMPLETE	
		*****	
		(AEP,G,UK,E,AUS,PX,SP)	
	7-685-871-01	SCREW +BVTT 3X6 (S)	
		< CAPACITOR >	
C102	1-162-282-31	CERAMIC	100PF 10% 50V
C103	1-162-215-31	CERAMIC	47PF 5% 50V
C104	1-162-215-31	CERAMIC	47PF 5% 50V
C106	1-130-472-00	MYLAR	0.0012uF 5% 50V
C107	1-106-359-00	MYLAR	4700PF 5% 200V
C108	1-126-052-11	ELECT	100uF 20% 10V
C202	1-162-282-31	CERAMIC	100PF 10% 50V
C203	1-162-215-31	CERAMIC	47PF 5% 50V
C204	1-162-215-31	CERAMIC	47PF 5% 50V
C206	1-130-472-00	MYLAR	0.0012uF 5% 50V
C207	1-106-359-00	MYLAR	4700PF 5% 200V
C208	1-126-052-11	ELECT	100uF 20% 10V
C301	1-128-489-11	ELECT	3300uF 20% 16V
C302	1-124-360-00	ELECT	1000uF 20% 16V
C303	1-124-122-11	ELECT	100uF 20% 50V

Ref. No.	Part No.	Description	Remark
C304	1-126-851-11	ELECT	22uF 20% 35V
C305	1-126-163-11	ELECT	4.7uF 20% 50V
C306	1-126-101-11	ELECT	100uF 20% 16V
C307	1-126-163-11	ELECT	4.7uF 20% 50V
C308	1-124-472-11	ELECT	470uF 20% 10V
C309	1-126-163-11	ELECT	4.7uF 20% 50V
C310	1-126-163-11	ELECT	4.7uF 20% 50V
C311	1-124-472-11	ELECT	470uF 20% 10V
C316	1-161-494-00	CERAMIC	0.022uF 25V
C317	1-126-052-11	ELECT	100uF 20% 10V
C318	1-161-494-00	CERAMIC	0.022uF 30% 25V
C319	1-126-022-11	ELECT	47uF 20% 16V
C320	1-126-022-11	ELECT	47uF 20% 16V
C322	1-161-494-00	CERAMIC	0.022uF 30% 25V
C327	1-162-211-31	CERAMIC	33PF 5% 50V
C328	1-126-052-11	ELECT	100uF 20% 10V
C330	1-162-207-31	CERAMIC	22PF 5% 50V
C331	1-126-052-11	ELECT	100uF 20% 10V
C332	1-164-159-11	CERAMIC	0.1uF 50V
C333	1-126-052-11	ELECT	100uF 20% 10V
C334	1-164-159-11	CERAMIC	0.1uF 50V
C335	1-164-159-11	CERAMIC	0.1uF 50V
C336	1-162-198-31	CERAMIC	8.2PF 10% 50V
C337	1-162-198-31	CERAMIC	8.2PF 10% 50V
C339	1-164-159-11	CERAMIC	0.1uF 50V
C340	1-126-052-11	ELECT	100uF 20% 16V
C351	1-136-165-00	FILM	0.1uF 5% 50V
C352	1-164-159-11	CERAMIC	0.1uF 50V
C361	1-136-165-00	FILM	0.1uF 5% 50V
C362	1-164-159-11	CERAMIC	0.1uF 50V
C366	1-164-159-11	CERAMIC	0.1uF 50V
C371	1-136-165-00	FILM	0.1uF 5% 50V
C700	1-162-306-11	CERAMIC	0.01uF 30% 16V
C710	1-162-306-11	CERAMIC	0.01uF 30% 16V
C720	1-162-306-11	CERAMIC	0.01uF 30% 16V
		< CONNECTOR >	
CN301	1-770-728-11	CONNECTOR, BOARD TO BOARD 9P	
CN302	1-770-728-11	CONNECTOR, BOARD TO BOARD 9P	
* CN303	1-568-839-11	SOCKET, CONNECTOR 23P	
CN304	1-506-468-11	PIN, CONNECTOR 3P	
* CN305	1-568-955-11	PIN, CONNECTOR 6P	
* CN306	1-568-951-11	PIN, CONNECTOR 2P	
CN307	1-568-802-11	SOCKET, CONNECTOR 19P	
* CN308	1-568-951-11	PIN, CONNECTOR 2P	
		< DIODE >	
D301	8-719-210-21	DIODE 11EQS04	
D302	8-719-210-21	DIODE 11EQS04	
D303	8-719-210-21	DIODE 11EQS04	
D304	8-719-210-21	DIODE 11EQS04	
D305	8-719-109-93	DIODE RD6.2ESB2	

**MAIN**

Ref. No.	Part No.	Description	Remark	Ref. No.	Part No.	Description	Remark
D306	8-719-024-99	DIODE 11ES2-NTA2B		R205	1-215-461-81	METAL 47K	1% 1/4W
D307	8-719-987-63	DIODE 1N4148M		R206	1-215-461-81	METAL 47K	1% 1/4W
D308	8-719-987-63	DIODE 1N4148M		R208	1-249-419-11	CARBON 1.5K	5% 1/4W F
D310	8-719-987-63	DIODE 1N4148M					
D311	8-719-987-63	DIODE 1N4148M		R209	1-249-419-11	CARBON 1.5K	5% 1/4W F
				R210	1-249-441-11	CARBON 100K	5% 1/4W
D312	8-719-109-85	DIODE RD5.1ES-B2		R211	1-249-409-11	CARBON 220	5% 1/4W F
D313	8-719-987-63	DIODE 1N4148M		R212	1-249-409-11	CARBON 220	5% 1/4W F
D315	8-719-110-60	DIODE RD24ES-B		R213	1-249-393-11	CARBON 10	5% 1/4W F
D316	8-719-109-84	DIODE RD5.1ES-B1					
		< IC >		R215	1-249-425-11	CARBON 4.7K	5% 1/4W F
IC301	8-759-330-29	IC LA5616		R301	1-249-431-11	CARBON 15K	5% 1/4W
IC302	8-759-821-93	IC LA5601		R302	1-249-425-11	CARBON 4.7K	5% 1/4W F
IC303	8-752-875-39	IC CXP84332-045Q		R306	1-247-807-31	CARBON 100	5% 1/4W
IC304	8-759-822-38	IC LA6510		R307	1-247-807-31	CARBON 100	5% 1/4W
IC305	8-759-634-51	IC M5218AP					
IC307	8-759-362-47	IC CXD8567AM		R309	1-249-429-11	CARBON 10K	5% 1/4W
IC308	8-759-634-51	IC M5218AP		R310	1-249-425-11	CARBON 4.7K	5% 1/4W F
IC309	8-759-634-51	IC M5218AP		R311	1-247-843-11	CARBON 3.3K	5% 1/4W
		< COIL >		R312	1-249-429-11	CARBON 10K	5% 1/4W
L304	1-412-297-11	INDUCTOR 3.3uH		R316	1-249-429-11	CARBON 10K	5% 1/4W
		< TRANSISTOR >					
Q101	8-729-141-26	TRANSISTOR 2SC3622A-LK		R317	1-249-429-11	CARBON 10K	5% 1/4W
Q102	8-729-141-26	TRANSISTOR 2SC3622A-LK		R318	1-249-429-11	CARBON 10K	5% 1/4W
Q201	8-729-141-26	TRANSISTOR 2SC3622A-LK		R319	1-249-429-11	CARBON 10K	5% 1/4W
Q202	8-729-141-26	TRANSISTOR 2SC3622A-LK		R321	1-249-417-11	CARBON 1K	5% 1/4W F
Q301	8-729-140-97	TRANSISTOR 2SB734-34		R322	1-249-417-11	CARBON 1K	5% 1/4W F
Q303	8-729-900-65	TRANSISTOR DTA144ES		R323	1-249-417-11	CARBON 1K	5% 1/4W F
Q304	8-729-900-65	TRANSISTOR DTA144ES		R324	1-249-411-11	CARBON 330	5% 1/4W
Q305	8-729-900-65	TRANSISTOR DTA144ES		R325	1-249-424-11	CARBON 3.9K	5% 1/4W F
Q306	8-729-119-76	TRANSISTOR 2SA1175-HFE		R326	1-247-807-31	CARBON 100	5% 1/4W
		< RESISTOR >		R327	1-249-411-11	CARBON 330	5% 1/4W
R101	1-249-436-11	CARBON 39K	5% 1/4W				
R102	1-249-436-11	CARBON 39K	5% 1/4W	R329	1-249-441-11	CARBON 100K	5% 1/4W
R103	1-249-431-11	CARBON 15K	5% 1/4W	R330	1-249-441-11	CARBON 100K	5% 1/4W
R104	1-249-431-11	CARBON 15K	5% 1/4W	R331	1-249-425-11	CARBON 4.7K	5% 1/4W F
R105	1-215-461-81	METAL 47K	1% 1/4W	R332	1-249-441-11	CARBON 100K	5% 1/4W
				R333	1-249-425-11	CARBON 4.7K	5% 1/4W F
R106	1-215-461-81	METAL 47K	1% 1/4W				
R108	1-249-419-11	CARBON 1.5K	5% 1/4W F	R334	1-249-425-11	CARBON 4.7K	5% 1/4W F
R109	1-249-419-11	CARBON 1.5K	5% 1/4W F	R335	1-249-429-11	CARBON 10K	5% 1/4W
R110	1-249-441-11	CARBON 100K	5% 1/4W	R336	1-249-429-11	CARBON 10K	5% 1/4W
R111	1-249-409-11	CARBON 220	5% 1/4W F	R337	1-249-421-11	CARBON 2.2K	5% 1/4W F
				R338	1-249-417-11	CARBON 1K	5% 1/4W F
R112	1-249-409-11	CARBON 220	5% 1/4W F				
R113	1-249-393-11	CARBON 10	5% 1/4W F	R339	1-249-417-11	CARBON 1K	5% 1/4W F
R115	1-249-425-11	CARBON 4.7K	5% 1/4W F	R340	1-249-417-11	CARBON 1K	5% 1/4W F
R201	1-249-436-11	CARBON 39K	5% 1/4W	R342	1-249-429-11	CARBON 10K	5% 1/4W
R202	1-249-436-11	CARBON 39K	5% 1/4W	R351	1-249-441-11	CARBON 100K	5% 1/4W
				R352	1-249-441-11	CARBON 100K	5% 1/4W
R203	1-249-431-11	CARBON 15K	5% 1/4W				
R204	1-249-431-11	CARBON 15K	5% 1/4W	R353	1-247-860-11	CARBON 16K	5% 1/4W
				R354	1-249-431-11	CARBON 15K	5% 1/4W
				R355	1-249-382-11	CARBON 1.2	5% 1/6W F
				R356	1-249-382-11	CARBON 1.2	5% 1/6W F
				R357	1-247-883-00	CARBON 150K	5% 1/4W
				R358	1-249-393-11	CARBON 10	5% 1/4W F
				R361	1-247-885-00	CARBON 180K	5% 1/4W
				R362	1-247-885-00	CARBON 180K	5% 1/4W
				R363	1-247-860-11	CARBON 16K	5% 1/4W

MAIN

RAY-CATCHER

T.MOTOR

T.SENS

Ref. No.	Part No.	Description	Remark
R364	1-249-431-11	CARBON 15K 5%	1/4W
R365	1-249-382-11	CARBON 1.2 5%	1/6W F
R366	1-249-382-11	CARBON 1.2 5%	1/6W F
R367	1-247-883-00	CARBON 150K 5%	1/4W
R368	1-249-393-11	CARBON 10 5%	1/4W F
R373	1-249-427-11	CARBON 6.8K 5%	1/4W F
R374	1-247-843-11	CARBON 3.3K 5%	1/4W
R375	1-249-439-11	CARBON 68K 5%	1/4W
R376	1-249-427-11	CARBON 6.8K 5%	1/4W F
R377	1-249-427-11	CARBON 6.8K 5%	1/4W F
R378	1-249-417-11	CARBON 1K 5%	1/4W F
R385	1-249-429-11	CARBON 10K 5%	1/4W
R700	1-249-427-11	CARBON 6.8K 5%	1/4W F
R710	1-249-427-11	CARBON 6.8K 5%	1/4W F
R720	1-249-427-11	CARBON 6.8K 5%	1/4W F
< VARIABLE RESISTOR >			
RV301	1-238-602-11	RES, ADJ, CARBON 47K (Suffix No-11, 12)	
RV301	1-230-723-11	RES, ADJ, CARBON 47K (Suffix No-13)	
< VIBRATOR >			
X301	1-579-175-11	VIBRATOR, CERAMIC (10MHz)	
X302	1-767-155-11	VIBRATOR, CRYSTAL (33.8688MHz)	
*****			
*	1-661-469-11	RAY-CATCHER BOARD	*****
*	4-985-300-01	HOLDER (P-T)	
< TRANSISTOR >			
Q801	8-729-926-31	PHOTO TRANSISTOR PT483F1S	
*****			
*	1-661-466-11	T.MOTOR BOARD	*****
< MOTOR >			
M801	A-4604-847-A	MOTOR ASSY (TABLE)	
*****			
*	1-661-470-11	T.SENS BOARD	*****
< CONNECTOR >			
CN802	1-506-481-11	PIN, CONNECTOR 2P	
CN803	1-506-481-11	PIN, CONNECTOR 2P	
< IC >			
IC801	8-749-924-18	IC PHOTO INTERRUPTER RPI-1391	

Ref. No.	Part No.	Description	Remark
IC802	8-749-924-18	IC PHOTO INTERRUPTER RPI-1391	
IC803	8-749-924-18	IC PHOTO INTERRUPTER RPI-1391	
< RESISTOR >			
R801	1-249-416-11	CARBON 820 5%	1/4W F
R802	1-249-416-11	CARBON 820 5%	1/4W F
R803	1-249-416-11	CARBON 820 5%	1/4W F
R804	1-249-415-11	CARBON 680 5%	1/4W F
*****			
MISCELLANEOUS			
*****			
4	1-773-183-11	WIRE (FLAT TYPE) (23 CORE)	
5	1-777-345-11	WIRE (FLAT TYPE) (19 CORE)	
△ 12	1-569-007-11	ADAPTOR, CONVERSION 2P (E,PX)	
304	1-769-069-11	WIRE (FLAT TYPE) (16 CORE)	
△ CNP901	1-575-042-21	CORD, POWER (US,CND)	
△ CNP901	1-575-651-21	CORD, POWER (AEP,G,SP)	
△ CNP901	1-696-027-11	CORD, POWER (E,PX)	
△ CNP901	1-696-845-11	CORD, POWER (AUS)	
△ CNP901	1-751-529-11	CORD, POWER (UK)	
FL701	1-517-517-11	INDICATOR TUBE, FLUORESCENT	
M801	A-4604-847-A	MOTOR ASSY, LOADING (TABLE)	
M802	A-4604-847-A	MOTOR ASSY, LOADING (LOADING)	
△ T501	1-429-670-11	TRANSFORMER, POWER (US,CND)	
△ T501	1-429-671-11	TRANSFORMER, POWER (AEP,G,UK,AUS,SP)	
△ T501	1-429-672-11	TRANSFORMER, POWER (E,PX)	

\*\*\*\*\*

The components identified by mark △ or dotted line with mark △ are critical for safety. Replace only with part number specified.	Les composants identifiés par une marque △ sont critiques pour la sécurité. Ne les remplacer que par une pièce portant le numéro spécifié.
--	--

